

PropertyLine



4 Vintners Close

Peterborough, PE3 6BT

Offers Over £270,000



Nestled in the charming Vintners Close, this delightful end-terrace house in Peterborough offers a perfect blend of comfort and convenience. With four spacious bedrooms, this property is ideal for families or those seeking extra space for guests or a home office. The well-appointed reception room provides a welcoming atmosphere, perfect for entertaining or relaxing after a long day.

Situated in a friendly neighbourhood, Vintners Close is conveniently located near local amenities, schools, and parks, making it an excellent choice for families. The area boasts good transport links, allowing for easy access to the wider Peterborough region and beyond.

This end-terrace house presents a wonderful opportunity for those looking to settle in a vibrant community while enjoying the comforts of a well-proportioned home. Whether you are a first-time buyer or seeking a new family residence, this property is sure to impress. Do not miss the chance to make this lovely house your new home.



Entrance Hall 10'6 x 3'8 (3.20m x 1.12m)
UPVC Door to front, Tiled flooring, Radiators, Stairs to first floor, Door to WC and Lounge

WC 5'7 x 2'9 (1.70m x 0.84m)
Toilet, Hand Basin, Window to side, Tiled flooring, and Fuse Box

Lounge 11'4 x 13'5 (3.45m x 4.09m)
UPVC Window to front, Understairs Cupboard, Door to kitchen diner and Carpet,

Kitchen Diner 14'6 x 12'3 (4.42m x 3.73m)
UPVC Window door to rear, wall and base unit, stainless one and half sink, extractor hood, space for cooker and washing machine, space for fridge freezer, 2 storage cupboards, radiator, kitchen area vinyl flooring, dining area carpet.

First Floor Landing
Doors to bedroom and stairs leading to 2nd Floor

Bedroom 1 13'5 x 14'6 (4.09m x 4.42m)
UPVC Window, Radiator, front balcony and Carpet

Bedroom 2 40'4" x 37'4" (12.3 x 11.4)
UPVC Window to garden, Radiator, Carpet and Storage Cupboards,

Second Floor Landing
UPVC Window, Doors to bedroom and 2 Storage Cupboards

Bedroom 3 8'9 x 8'3 (2.67m x 2.51m)
UPVC Window, Radiator and Carpet.

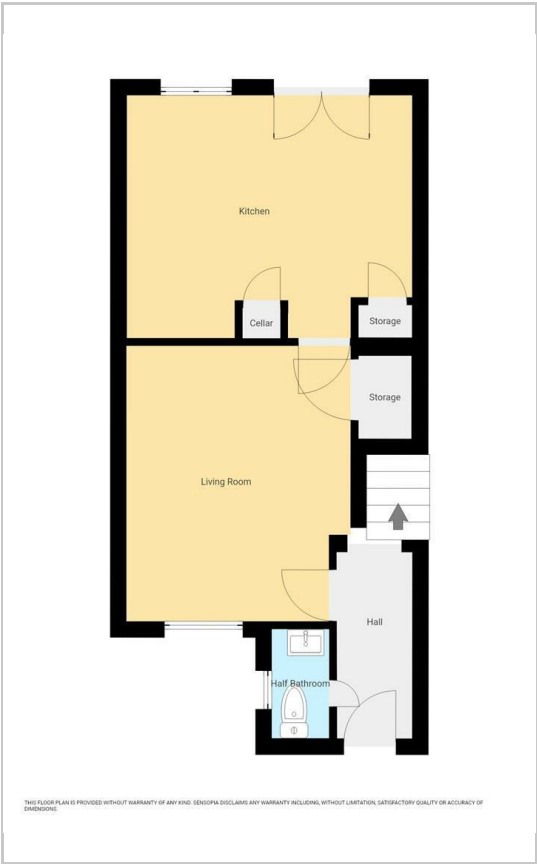
Bedroom 4 14'7 x 8'1 (4.45m x 2.46m)
2 UPVC Windows, Carpets and Radiators

Outside
Fully enclosed rear garden with a shed

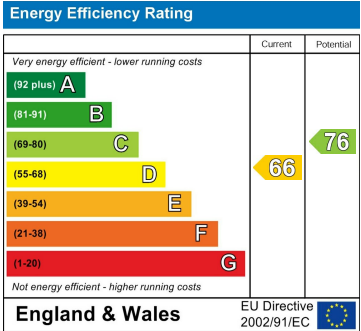
Area Map



Floor Plans



Energy Efficiency Graph



These particulars, whilst believed to be accurate are set out as a general outline only for guidance and do not constitute any part of an offer or contract. Intending purchasers should not rely on them as statements of representation of fact, but must satisfy themselves by inspection or otherwise as to their accuracy. No person in this firms employment has the authority to make or give any representation or warranty in respect of the property.